

Mount Washington

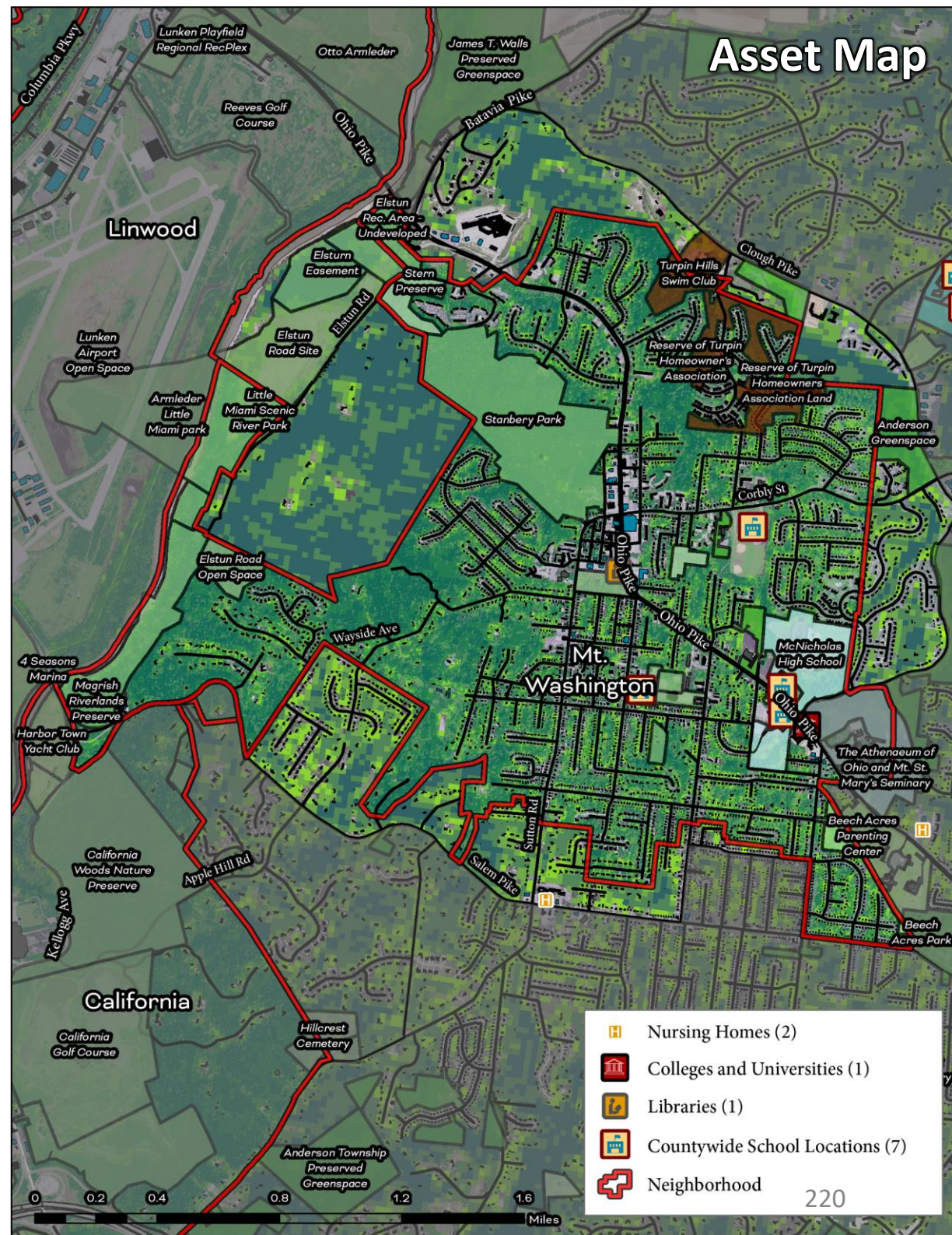
Cincinnati Neighborhood Profile

Mt. Washington has a population of 14,681 people (75.8% white, 10.1% Black, 5.4% Hispanic) where 15% of the population is over 65 years old, 23.7% of the population is under 18. The average life expectancy is 77.1 and 9.8% of the residents live in poverty (ranks 6th lowest of the neighborhoods assessed).

Most disease prevalence indicators rank in the top 10 of the neighborhoods assessed, for example 9.2% have diabetes (ranks 8th), 27.2% have high blood pressure (ranks 8th), and 29% are obese (ranks 8th). The 1,496 people living with disability (10.2%) ranks 14th of the neighborhoods assessed.

Overall, 66.7% of the land is vegetated and 43.7% is tree canopy. All air quality indicators from PM 2.5 to cancer risk from air pollution have “low” levels of exposure for residents. Ozone is a “moderate” exposure and proximity to water pollution is “extreme”.

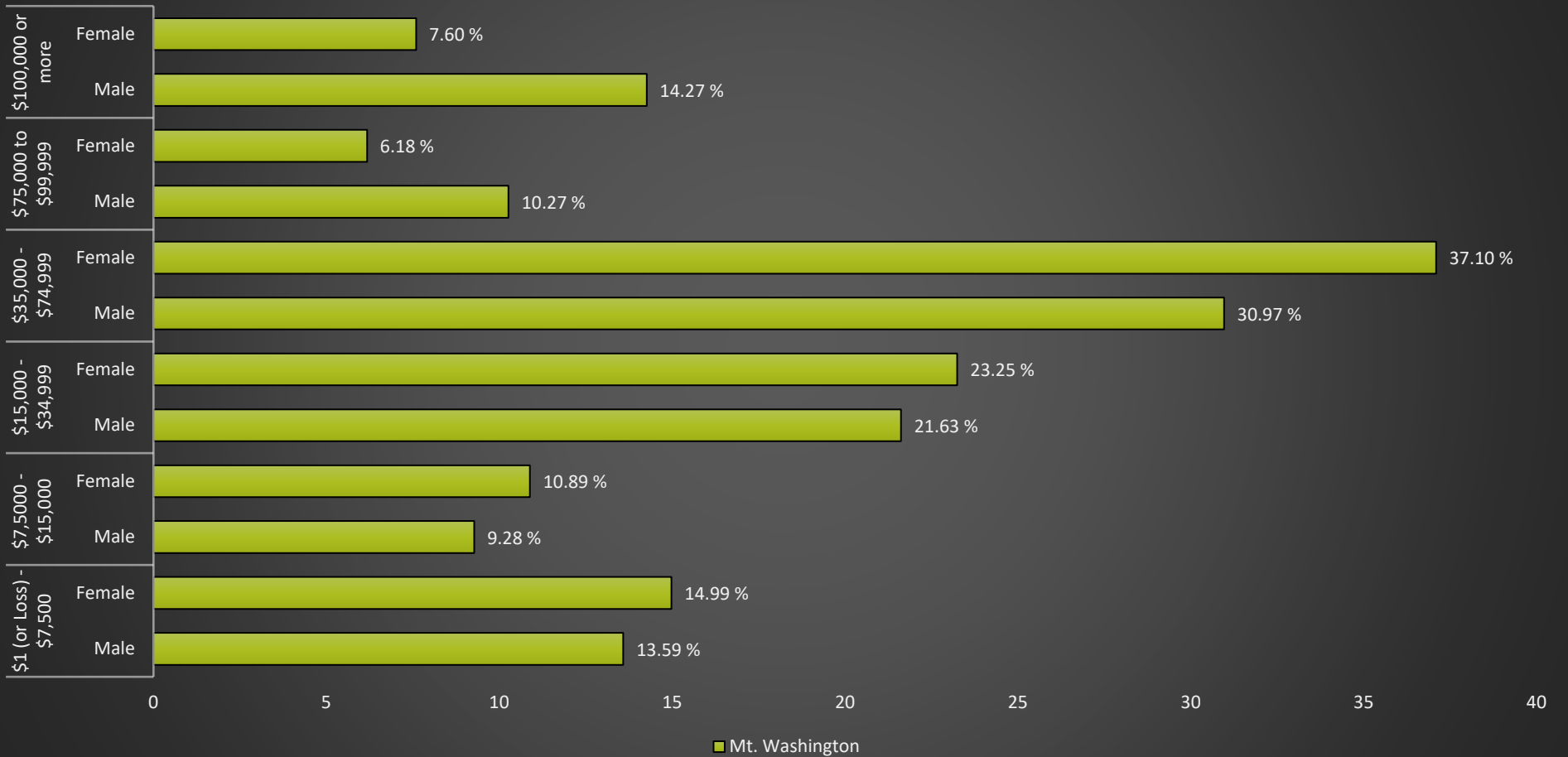
50.4% of the population has attended college and 31.1% has obtained a Bachelor’s degree or higher. 44.1% of the housing units are occupied by renters and 23.2% of the renters are paying more than 30% of their income to rent and utilities. For comparison, 10.9% of homeowners are paying more than 30% of their income on mortgage and utility costs.



Mount Washington

Cincinnati Neighborhood Profile

Mt. Washington: Annual Income by Gender



Mount Washington Notable Indicators

<i>Diabetes Rates</i>	<i>Tree Canopy</i>	<i>Proximity to Water Pollution Sources</i>
9.2% (8th lowest)	43.7% (7th highest)	Extreme

Mount Washington

Cincinnati Neighborhood Profile

People			
Indicator	Rank	%	# of Persons
Population	-	-	14,681
Persons over 65	34	15.0%	2,201
Persons 17 and Under	28	23.7%	3,481
Children Living w/ Grandparents	19	0.9%	131
Race/Ethnicity:			
Black	-	10.1%	1,476
white	-	75.8%	11,135
Asian	-	1.5%	218
Other	-	12.6%	1,852
Latinx	-	5.4%	797
Persons 5 and Older in Households w/ Limited English Ability	19	0.2%	29

Health			
Indicator	Rank	Value	
Life Expectancy	14	77.1 years	-
Disease Prevalence Estimates:			
	Rank of % w/Condition	% with Condition	Persons with Condition
Asthma	7	8.8%	1,292
Cancer	36	6.4%	934
Diabetes	8	9.2%	1,352
High Blood Pressure	8	27.2%	4,000
Heart Disease	15	6.0%	882
Kidney Disease	10	2.4%	352
Obesity	8	29.0%	4,264
Lack of Health Insurance	7	7.2%	1,055
Persons w/ Independent Living Difficulty	15	1.9%	286
Persons Living w/ Disability	14	10.2%	1,496

Ecosystems and Infrastructure		
Indicator	Rank	Value
Tree Canopy Coverage	7	43.7%
Greenness of Land Surface	11	66.7%
Percent Land in Parks and Greenspaces	13	20.8%
Impervious Surface	7	19%
Heat Island Exposure	9	0.12
Walkability	-	Least Walkable to Above Average
Persons w/ Low-Income and Low Food Access	8	2.1%
Transit Accessibility	-	Poor to Excellent
Daytime Population vs. Resident Population	9	49.5%
Commuters Leaving Each Day	-	7,383
Commuters Using Public Transit	12	3.2%

Mount Washington

Cincinnati Neighborhood Profile

Socio-Economic Indicators			
Indicator	Rank	%	#
Persons Living in Poverty	6	9.8%	1,441
SNAP Recipient Households	16	13.8%	940
Educational Attainment:			
Less than High School	-	3.5%	-
HS or Equivalent	-	12.6%	-
Some College	-	12.1%	-
Associate's Degree	-	7.2%	-
Bachelor's Degree or Higher	-	31.1%	-
Educational Attainment Index	14	0.50	-
Extreme Housing Burdens:			
Renter-Occupied Housing (as % of All Housing Units)	8	44.1%	2,994
Renters Spending 30% of Income or More on Rent + Utilities	18	23.2%	1,575
Renters Spending 50% of Income or More on Rent + Utilities	20	11.0%	749
Homeowners Spending 30% of Income or More on Mortgage + Utilities	4	10.9%	413
Average Energy Costs (as % of Income)	11	2.6%	-
Persons without Vehicle Access	9	4.2%	616

Built Environmental Hazards		
Indicator	Relative Exposure Level	Value
Traffic Exposure	Moderate	-
Potential Lead Paint Exposure (Houses Built pre-1960)	Low	37.39%
Cancer Risk from Air Pollution	Low	-
Respiratory Disease Risk from Air Pollution	Low	-
Proximity to Water Pollution Sources	Extreme	-
PM2.5 Levels in Air, µg/m3	Low	9.48
Ozone Concentration, ppb	Moderate	46.56
Diesel Particulate in Air, µg/m3	Low	0.57
Proximity to Superfund Sites	Very High	-
Proximity to Potentially Toxic Industrial Activity	Low	-
Proximity to Hazardous Waste Treatment and Disposal Facilities	Low	-

Neighborhood Planning	
Indicator	Description
Community Councils	Mount Washington Community Council
Community Development Corporations	Mt. Washington Community Urban Redevelopment Corporation
Community Plans	Mt. Washington Comprehensive Plan (2007)